



CPTT Installation Guide

Pre-requisites

Hardware

1 server (Physical, shared or virtual via VMWARE ESX or ESXi)
512 MB Ram
10Mbit Network Interface card.
10GB or more Disk Space

Software

Operating System: Linux or Windows Based Server
Apache Webserver or compatible (IBM HTTP, or MS IIS etc). version 2.2 or higher.
MySQL version 5.2 or higher
PHP – version 5.2.12 or higher

Application Architecture

This application is built using 4 primary technologies. HTML, JavaScript, PHP and MySQL.

As such, any webserver that supports these will be able to run the application.

Forms are presented using HTML and Javascript, submission of the forms is intercepted by PHP and processed, the data is then written to MySQL.



Installation

Installing this application is very easy, it entails copying a folder and adjusting 2 configuration files.

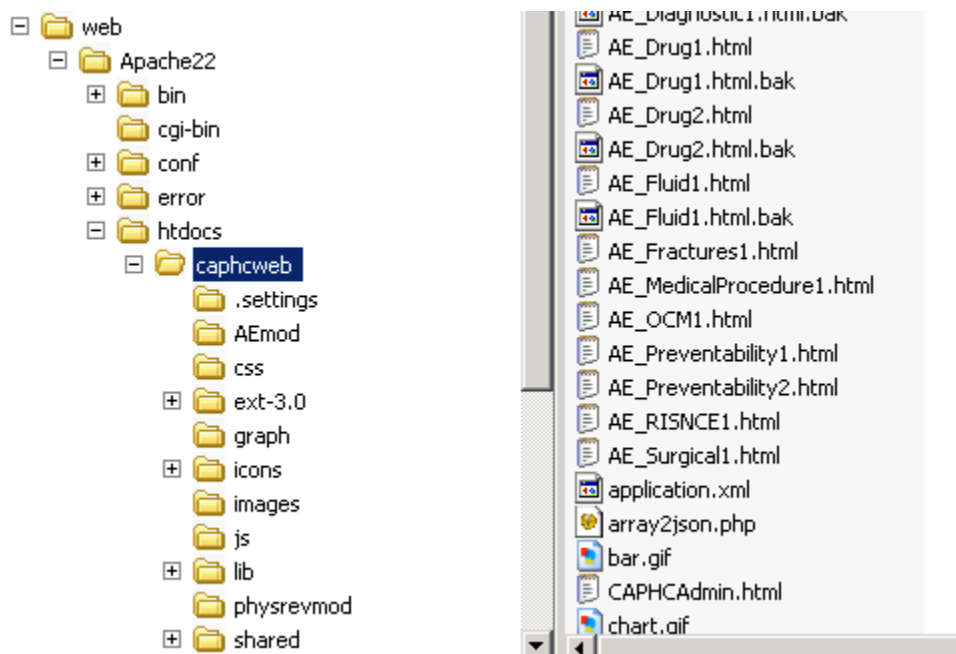
The data storage container can be “restored” using MySQL Administrator.

Software sub components.

Before the application itself can be installed, Apache, PHP and MySQL must each be installed and tested. Documentation for this is located on the respective sites. Each of these components is available free of charge at their respective sites.

- a) <http://www.apache.org/>
HTTP Server
- b) <http://www.php.net/downloads.php>
when installed on IIS you may need to adjust the PHP.ini to suppress warnings, otherwise the forms may generate an error 500 on submit.
- c) <http://dev.mysql.com/downloads/mysql/>
Community Edition
(other SQL compatible databases may work, but are not supported. The PHP files would need to be modified to support the unique syntax used on some servers.)
- d) JavaScript and HTML require no install, as they are languages understood by the Web Browser.

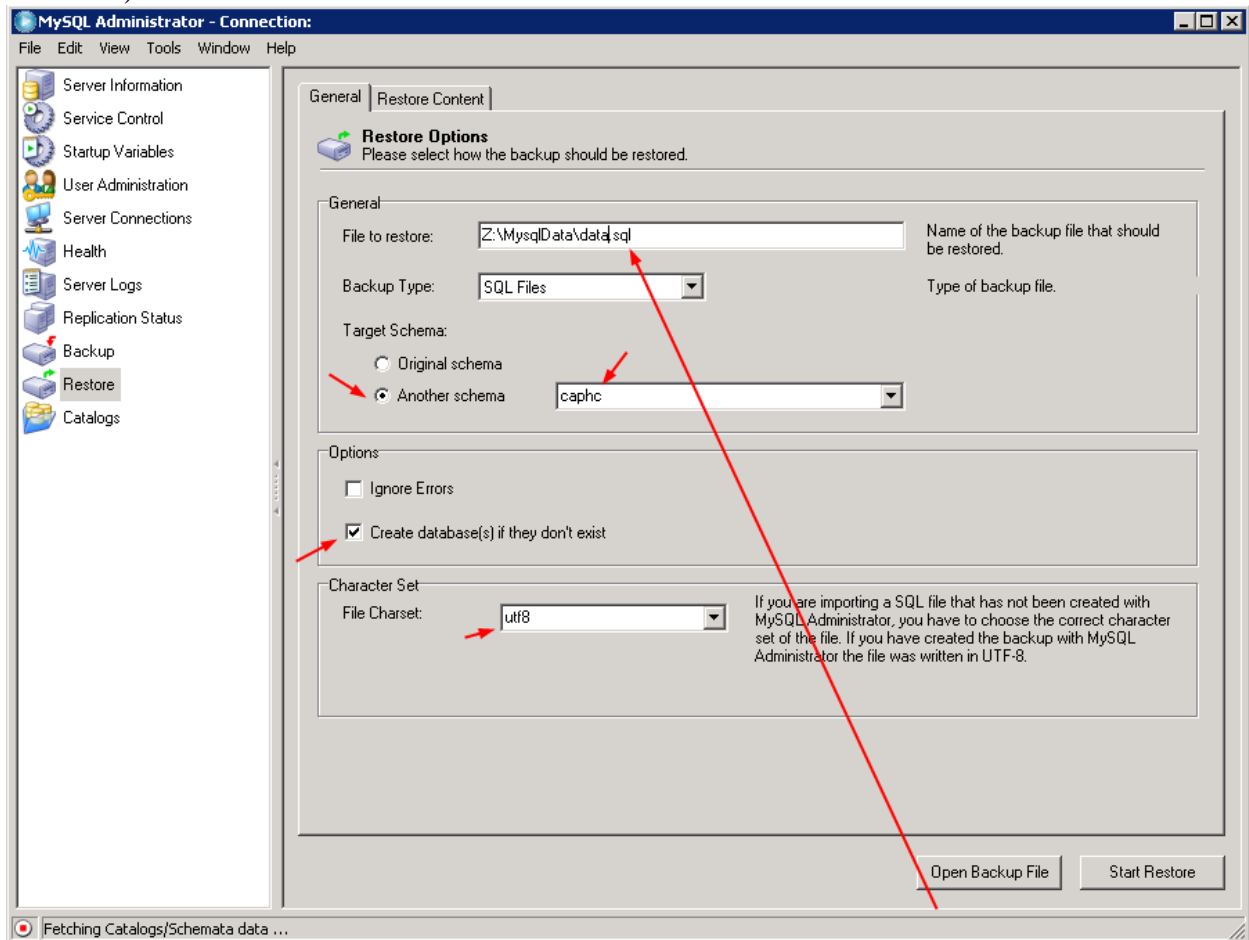
Once the underlying components have been installed and tested simply unzip the zip file into <apache folder> / htdocs/ caphcweb. (similar to below)





2) Restore the data.sql file

Restore the data.sql file to a new schema. Enable the “create databases if they don’t exist” option. The schema should be called **CAPHC** which can be changed, however changing it will lead to additional configuration modifications. (In MySQL Schema is synonymous with database.)





3) Configuring config.js (js folder)

Config.js has 2 items to customize for your environment.

phpURL must point to the folder that the CAPHCWEB php & other files are stored in.

clientName should be changed to your organizations name.

Please note that lines must end in semicolons (;) and your text changes should be in single quotes. Do not use an apostrophe within text strings.

```
var phpURL = 'http://host.domain.com/caphcweb/';  
var appTitle = 'CAPHC - Paediatric Trigger Tool (CPTT) Version: ';  
var appVersion = '1.0.0.18';  
var clientName = 'My Childrens Hospital';  
var initialized = false;
```

Config.php defines which database user account and database schema will be used to store data. Specify your values on the right side of the = sign. Lines must end in semicolons (;) and the values must be enclosed in single quotes. We do not recommend using any text with spaces or non standard characters in it, other than the password. Do not use a single apostrophe in the password itself.

```
Config.php - Notepad  
File Edit Format View Help  
<?php  
    $GLOBALS['server'] = 'localhost';  
    $GLOBALS['user'] = 'root';  
    $GLOBALS['password'] = 'password';  
    $GLOBALS['database'] = 'caphc';  
  
    function ReturnServerError($msg)  
    {  
        //die('Internal server Error  
        die('Internal server Error:  
    }  
?>
```



**4) Testing the application. The URL will be in the format of :
hostname/caphcweb/main.html**

Ex) myhospitalintranet/caphcweb/main.html

If successful, you will see the launch page.



Testing PHP, a test script is available in the install kit. Please adjust the path as appropriate, specifying the host and domain.

<http://host.domain.com/caphcweb/test.php>

When you execute the above URL in a working environment, the browser will show the following message:



Test Successful



Users and Roles

The default ID's that are stored in the USER table are:

test@test.com / test

trig@test.com / trig

phys@test.com / phys

Fee free to add other users using the MySQL query browser tool.

1) Configuring Roles

Each user has a role assigned to them. (USER table AND USER_ROLE table)

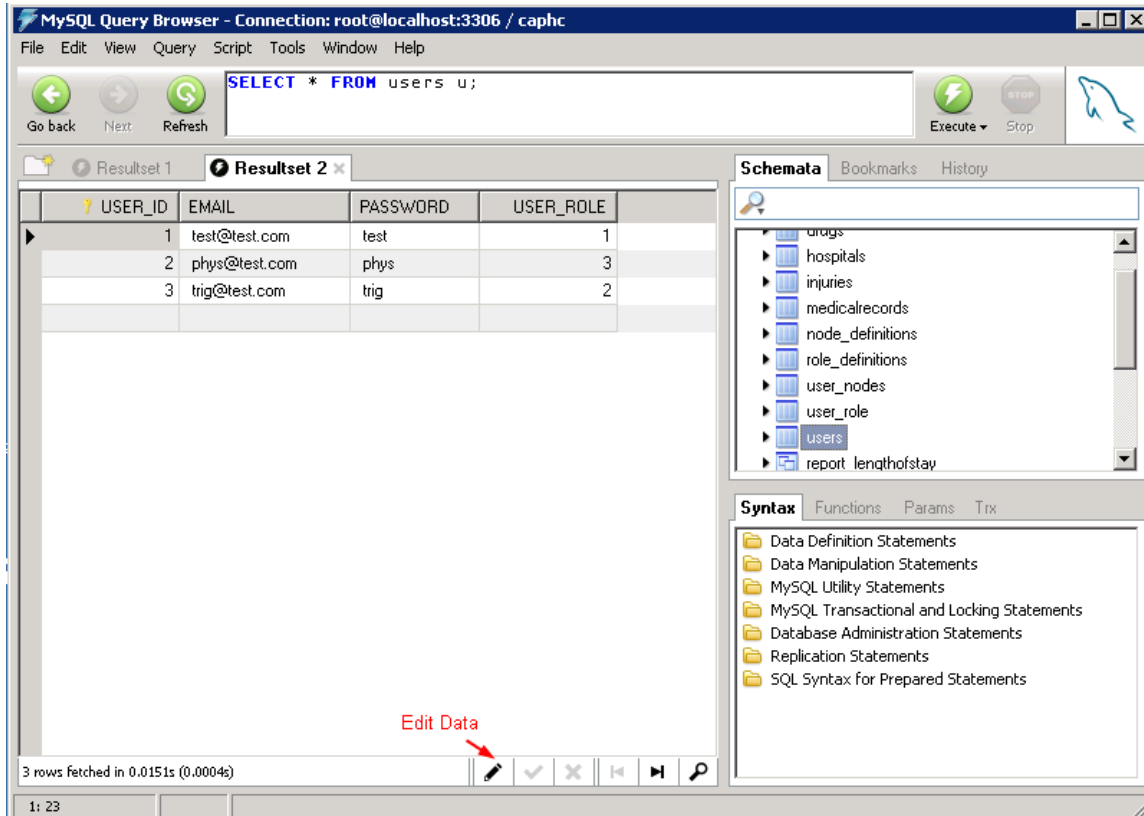
The role separates trigger tool users from physician reviewers, hospital metrics and database administrators.

The roles are shown below for reference. The description, while modifiable, will not change the programs internal meaning of the role_id. Ie) changing the description of role ID 1 to “abc” will not affect users where role_id=1.

ROLE_ID	ROLE_DESCRIPTION
1	Admin
2	Trigger Review
3	Physician Review
4	Reports Only

2) Setting up Additional Users

Users are listed in the USERS table. Using the MySQL Query Browser, you can easily add users to the list.



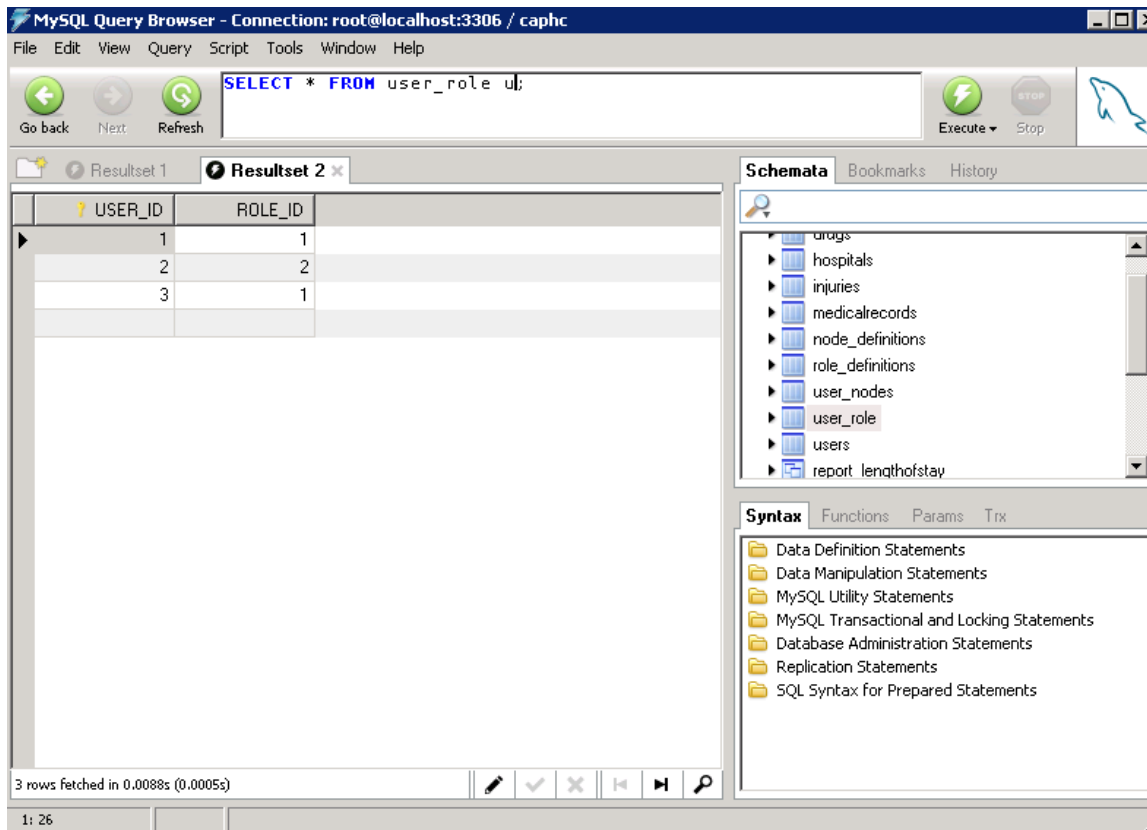
The screenshot shows the MySQL Query Browser interface. The main window displays the results of a query: `SELECT * FROM users u;`. The results are shown in a table with the following data:

USER_ID	EMAIL	PASSWORD	USER_ROLE
1	test@test.com	test	1
2	phys@test.com	phys	3
3	trig@test.com	trig	2

At the bottom of the window, there is a toolbar with several icons. A red arrow points to the 'Edit Data' icon, which is represented by a pencil. The status bar at the bottom left indicates '3 rows fetched in 0.0151s (0.0004s)'.



After you add a user, you must specify their role in the USER_ROLE table as well.



Your application instance is now ready for use.

You can setup other instances of the application by simply copying the contents of the CAPHCWeb folder to another folder, and creating another database instance. Then adjust the config.js and config.php files in that new folder as appropriate.

This means you can have multiple studies happening at the same time, with their data stored separately.

If you have further questions about the tool please contact us via the CAPHC website.
<http://www.caphc.org/>