



**CAPHC** Canadian Association of Paediatric Health Centres  
**CPDSN** Canadian Paediatric Decision Support Network

## **Expanding CAPHC Portal Community of Practice (CoP) to Include CAPHC Community Hospitals**

**April 22, 2010**

Elaine Orrbine, President and CEO ,CAPHC, Ottawa

Leah Boon, National Coordinator, CAPHC-CPDSN, Ottawa

Sharon Tracy, Manager CIHI Portal Services, Toronto

Linda Elias, Data Use Specialist, CIHI Portal Services, Toronto



**CAPHC** Canadian Association of Paediatric Health Centres  
**CPDSN** Canadian Paediatric Decision Support Network

# Webinar Agenda

1. Welcome – Elaine Orrbine
2. CIHI Portal Services Overview - Sharon Tracy
3. CAPHC-CPDSN Overview – Leah Boon
4. Expanding to include CAPHC Community Hospitals – Leah Boon & Linda Elias
5. Group discussion & Questions – All
6. Wrap Up – Elaine Orrbine



**CAPHC** Canadian Association of Paediatric Health Centres  
**CPDSN** Canadian Paediatric Decision Support Network

# Session Objectives

- Provide an overview and demonstrate the benefits of CAPHC-CPDSN & CIHI Portal Collaboration- an effective working model for Pan Canadian Paediatric Benchmarking
- Propose a preliminary plan for expanding the scope of CAPHC-CPDSN to include interested CAPHC Member Community Hospitals interested in Benchmarking with CIHI Portal
- Dialogue about the need to expand the scope of Paediatric Benchmarking across the continuum of care



**CAPHC** Canadian Association of Paediatric Health Centres  
**CPDSN** Canadian Paediatric Decision Support Network

# CAPHC-CPDSN: An overview



**CAPHC** Canadian Association of Paediatric Health Centres  
**CPDSN** Canadian Paediatric Decision Support Network

# What is a Community of Practice?

- A group of people who share an interest, a craft, and/or a profession.
- Cops' are made up of 3 key components: the domain (topic of interest), the community (who) and the practice (shared resources)

The first official CoP using the CIHI Portal is the Canadian Association of Paediatric Health Centres (CAPHC)



**CAPHC** Canadian Association of Paediatric Health Centres  
**CPDSN** Canadian Paediatric Decision Support Network

# Current CPDSN CoP Model

- Program within CAPHC
- 16 Paediatric Academic Health Centres
- Governed by Steering Committee
- Local Resource Pool of Portal Users supported by CPDSN National Office and CIHI

***CAPHC - CPDSN's MANDATE:***

***To coordinate and oversee national data sharing, networking and benchmarking for the paediatric health community.***

***Enable/support CAPHC's strategic priorities***



**CAPHC** Canadian Association of Paediatric Health Centres  
**CPDSN** Canadian Paediatric Decision Support Network

# Background:

- ❑ 2006 CAPHC-CPDSN is the Beta site for CIHI's New health data analytical software tool "The CIHI Portal"
- ❑ CPDSN Membership fee and preferred CoP rate for CIHI Portal Subscription
- ❑ CAPHC-CPDSN partners with CIHI as it's primary data supplier
- ❑ 2008-Renewal service agreement with CIHI (2008-2011)
- ❑ 2010-CAPHC-CPDSN's 4 member Quebec centres begin CIHI Portal Pilot



**CAPHC** Canadian Association of Paediatric Health Centres  
**CPDSN** Canadian Paediatric Decision Support Network

## Mutual Goals :

- Increase the use of Canadian health data for advancing the improvement of clinical outcomes and decision support
- A more inclusive Pan Canadian picture of paediatric benchmarking

### **Value:**

A broader paediatric evidence based dataset as the foundation to effecting system wide change



**CAPHC** Canadian Association of Paediatric Health Centres  
**CPDSN** Canadian Paediatric Decision Support Network

# Challenges:

- Changes in coding & abstracting practices
- Variations in quality of clinical documentation,
- Variations in health delivery models & processes
- Competing priorities within each organization
- CPDSN data represents approx 35 % of all Canadian Paediatric activity. To reflect the full picture we need to benchmark across the continuum of care!



**CAPHC** Canadian Association of Paediatric Health Centres  
**CPDSN** Canadian Paediatric Decision Support Network

# What Has Worked

- ✓ CIHI Portal Operations team /National Coordinator and CPDSN work group model
- ✓ Project Lead-Data Use Specialist/National Coordinator liaisons
- ✓ Quarterly CPDSN led Portal User Meetings
- ✓ CoP preferred pricing model



**CAPHC** Canadian Association of Paediatric Health Centres  
**CPDSN** Canadian Paediatric Decision Support Network

# CIHI Portal Support Model

- ✓ Technical and methodology support
  - ✓ Access to provincial Portal Services Senior Analyst
  - ✓ Extended business hours
  - ✓ Access to CIHI expertise
  - ✓ E-queries
- ✓ Regular CIHI web based '**Portal User Community**' meetings
- ✓ CIHI Monthly '**We're Here to Help**' sessions
- ✓ Online education and Instructor Led Training
- ✓ Portal Services newsletter
- ✓ Annual CIHI Portal User Conference
- ✓ CIHI representation at CAPHC Annual Conference



**CAPHC** Canadian Association of Paediatric Health Centres  
**CPDSN** Canadian Paediatric Decision Support Network

## Benefits :

- ✓ Access to Pan Canadian Paediatric Data is achieved
- ✓ Development of CIHI Portal product is supported by CoP user feedback
- ✓ Support by CIHI Portal team and CAPHC-CPDSN National Coordinator and Subject Matter Experts within our network (Teleconference & Webinar technologies)
- ✓ CoP Resource Pooling



**CAPHC** Canadian Association of Paediatric Health Centres  
**CPDSN** Canadian Paediatric Decision Support Network

# Data Sharing & Benchmarking

“The voyage of discovery lies not in seeking new horizons, but in seeing with new eyes”

Marcel Proust

CAPHC-CPDSN Pan Canadian Annual Benchmarking Reports:

- 57 paediatric indicators
- Trending and comparability reports in ICD10 CA/CCI

- Relevant Special Projects
- Timely Peer to Peer data requests
- CAPHC Annual Conference-CPDSN Symposium





**CAPHC** Canadian Association of Paediatric Health Centres  
**CPDSN** Canadian Paediatric Decision Support Network

# Special Projects: the 'so what' factor

## Paediatric Asthma Special Project

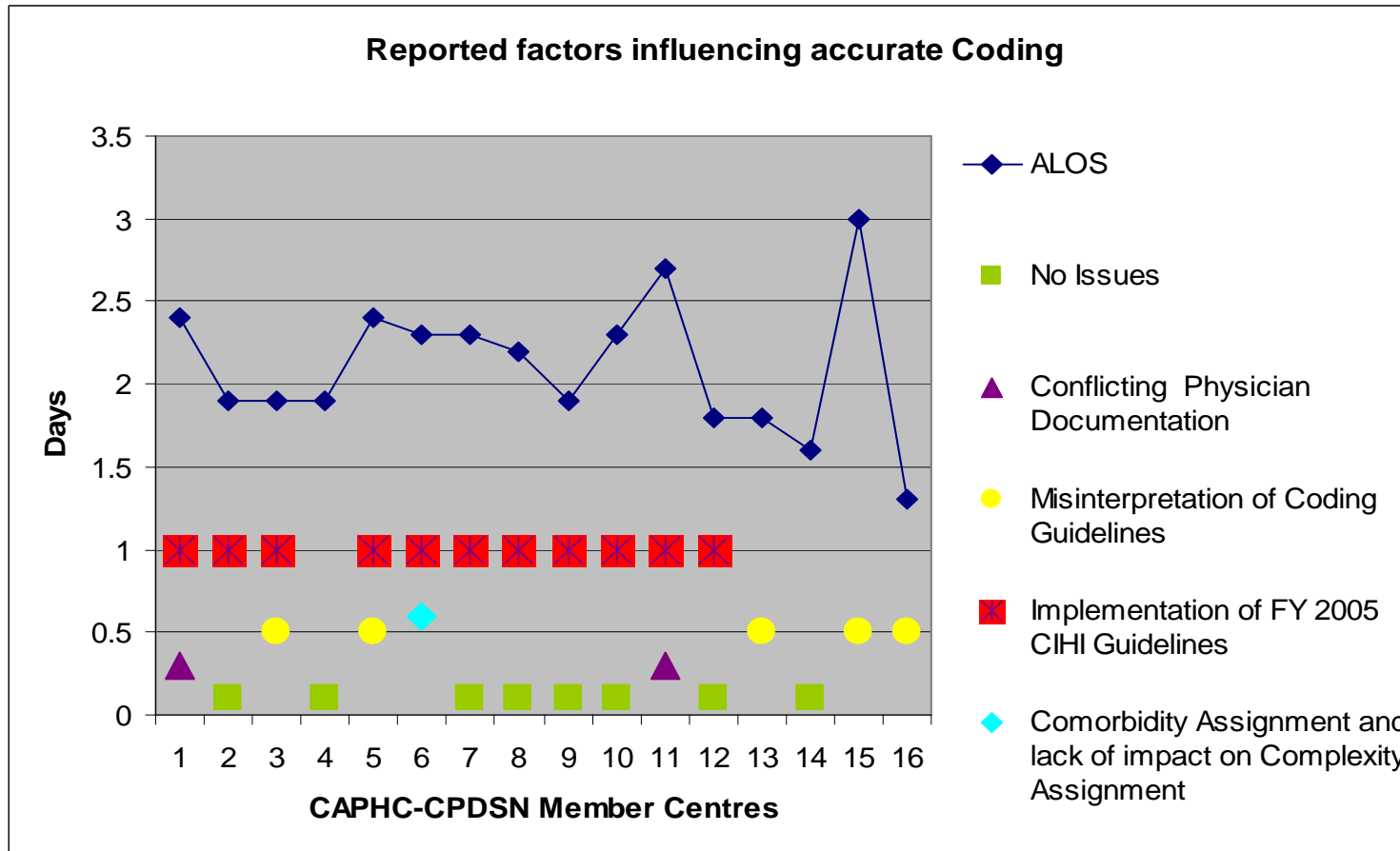
### PHASE 1 (2007-08)

- Inpatient ALOS variability
  - Was it due to care management strategies?
  - Was it due to coding /documentation inconsistencies?



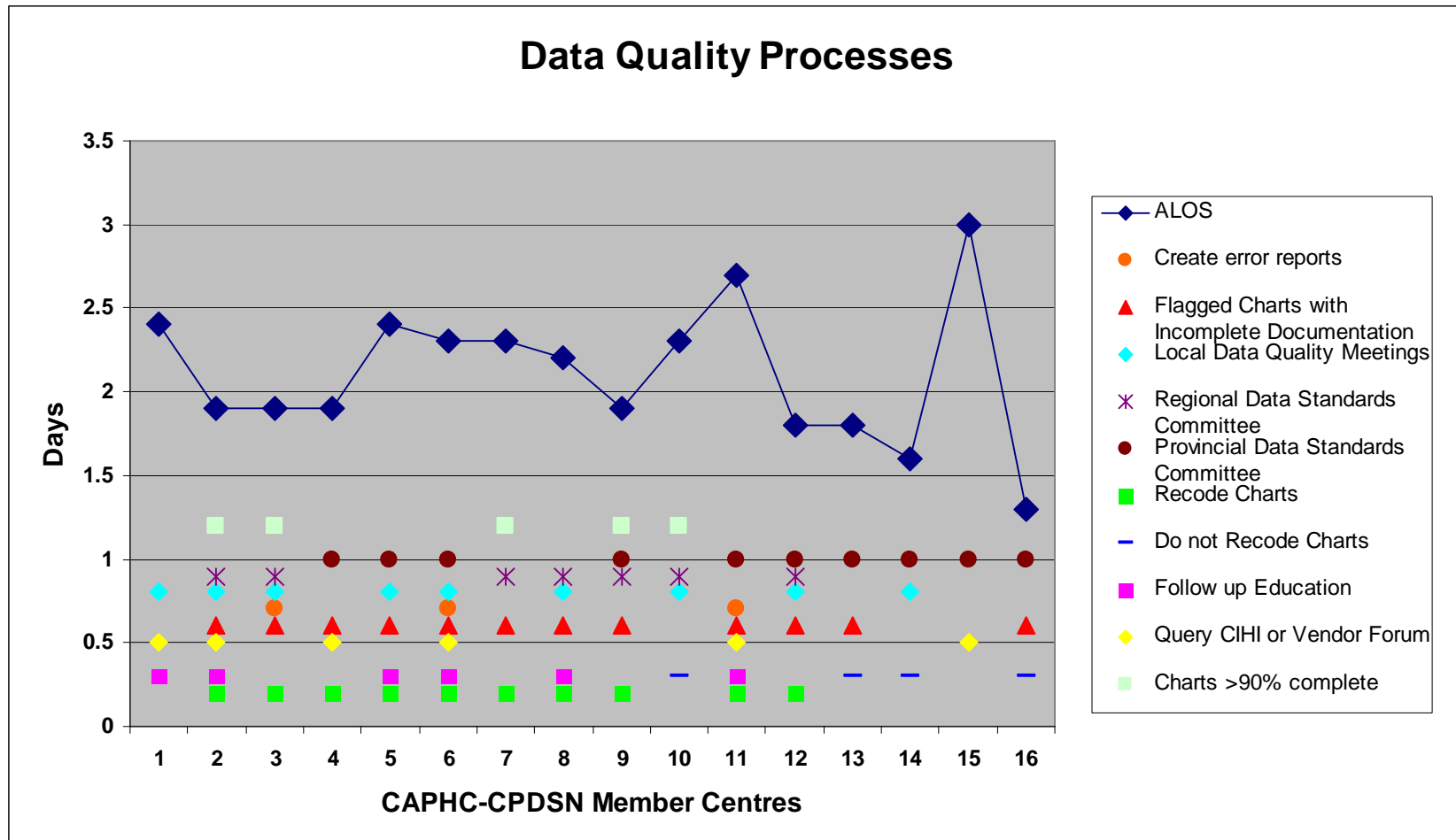
# Asthma ALOS Variation Special Project

(2007- 08)



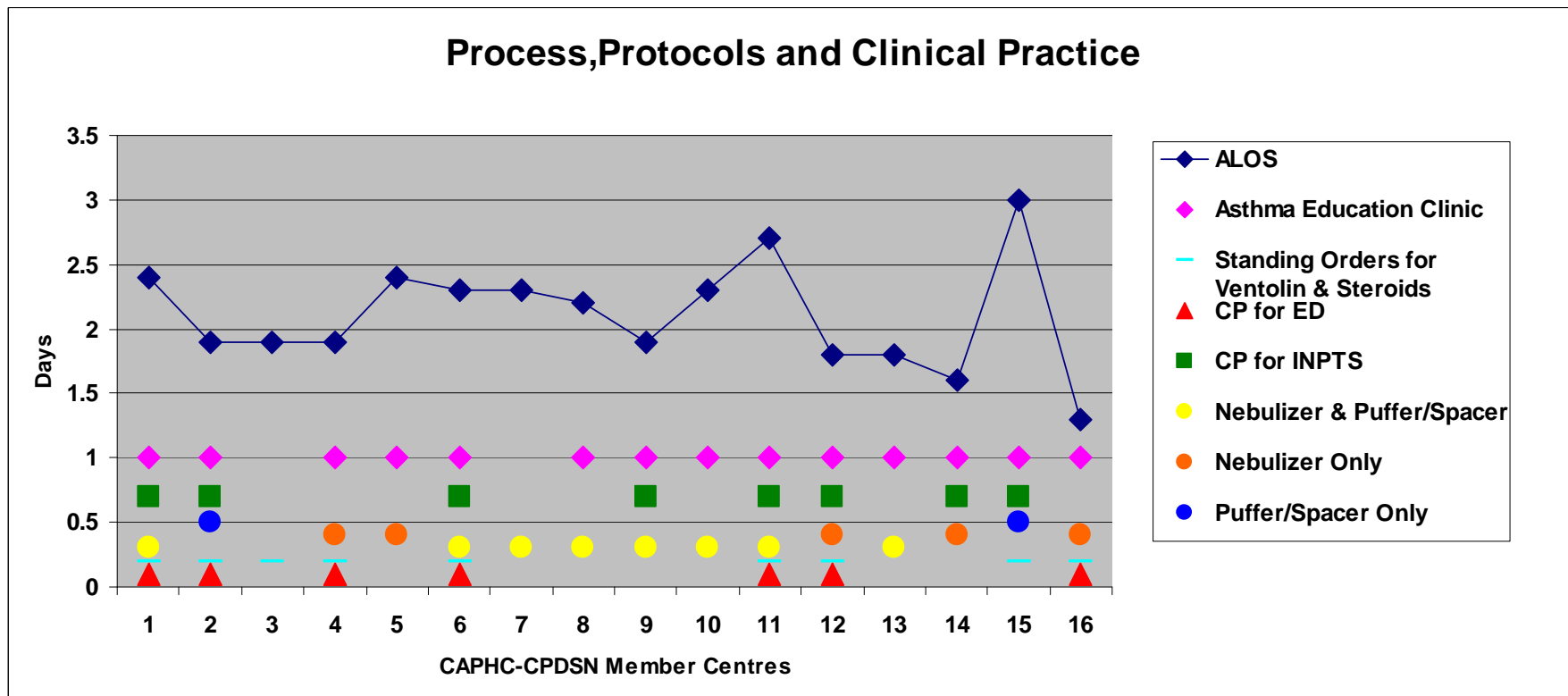


# Asthma ALOS Variation Special Project (2007-08)





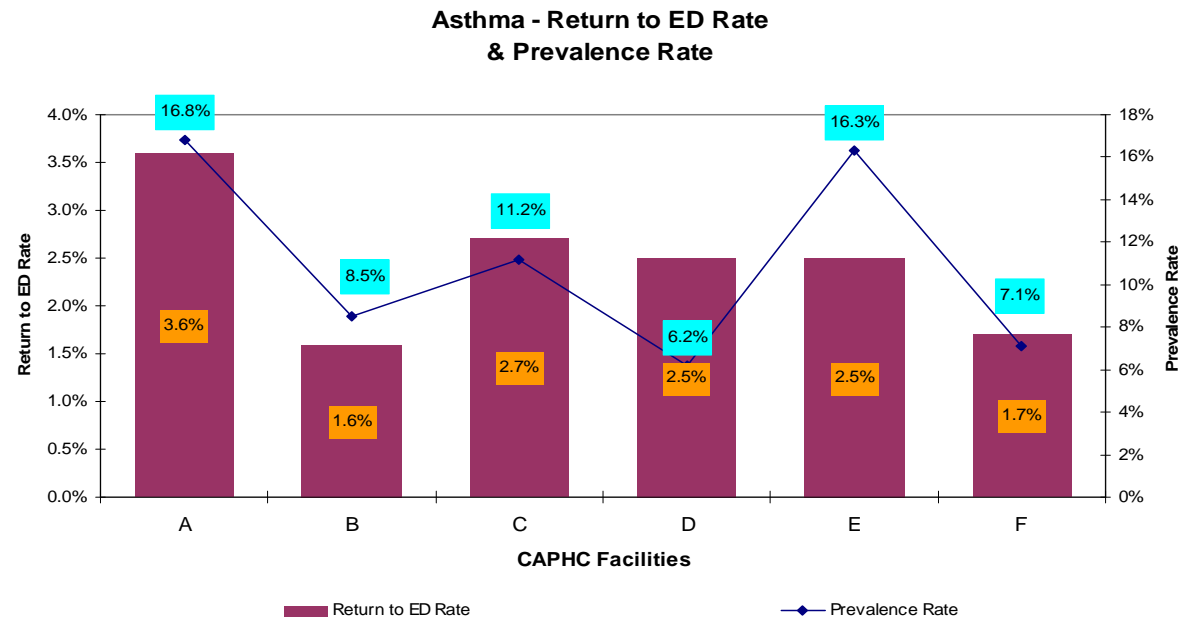
# Asthma ALOS Variation Special Project (2007-08)





# Phase 2: Paediatric Asthma Return to ED Rate Indicator

- ❑ 2008-09 Pilot: Indicator Prototype and methodology validated
- ❑ Standard & flexible method for deriving prevalence rates (adding local context)
- ❑ Identification of tools (resources & strategies), benchmarks & best practice locations
- ❑ Expanded participation scope from 6 to 10 centres and included in 2010 CAPHC-CPDSN Annual Benchmarking Report





**CAPHC** Canadian Association of Paediatric Health Centres  
**CPDSN** Canadian Paediatric Decision Support Network

## Why join CPDSN?

- Access to timely national Paediatric expertise
  - Pan Canadian Benchmarking using the CIHI Portal
  - Sharing of best practices
  - Development of national paediatric indicators
- ✓ *To create a broader paediatric evidence based dataset as the foundation to affecting system wide change*



**CAPHC** Canadian Association of Paediatric Health Centres  
**CPDSN** Canadian Paediatric Decision Support Network

## Paediatric Benchmarking across a Continuum of Care – Bridging the data gap by expanding CPDSN to include CAPHC Community Hospitals





**CAPHC** Canadian Association of Paediatric Health Centres  
**CPDSN** Canadian Paediatric Decision Support Network

# Assumptions:

- CAPHC-CPDSN will continue to act as broker and all community hospital members will become part of the current Community of Practice (CoP)
- CAPHC Community Hospitals will benefit from a discounted CoP subscription to Portal
- Community Hospital representation will be included in CAPHC's governance structure



**CAPHC** Canadian Association of Paediatric Health Centres  
**CPDSN** Canadian Paediatric Decision Support Network

# Three Business Model Options:

- 1) **Current-Local Resource Pool**- Dedicated Paediatric analysts at each hospital, support from CPDSN National Office
- 2) **Centralized Resource Model** – Paed Analyst service provided by CPDSN National Office
- 3) **Hybrid** - A combination of the two models



**CAPHC** Canadian Association of Paediatric Health Centres  
**CPDSN** Canadian Paediatric Decision Support Network

## **Expanding to include Community Hospitals**

**N=18 CAPHC Community Hospitals**

**Sept 1, 2010-Phase 1**

- Pan Canadian roll out 6-9 sites

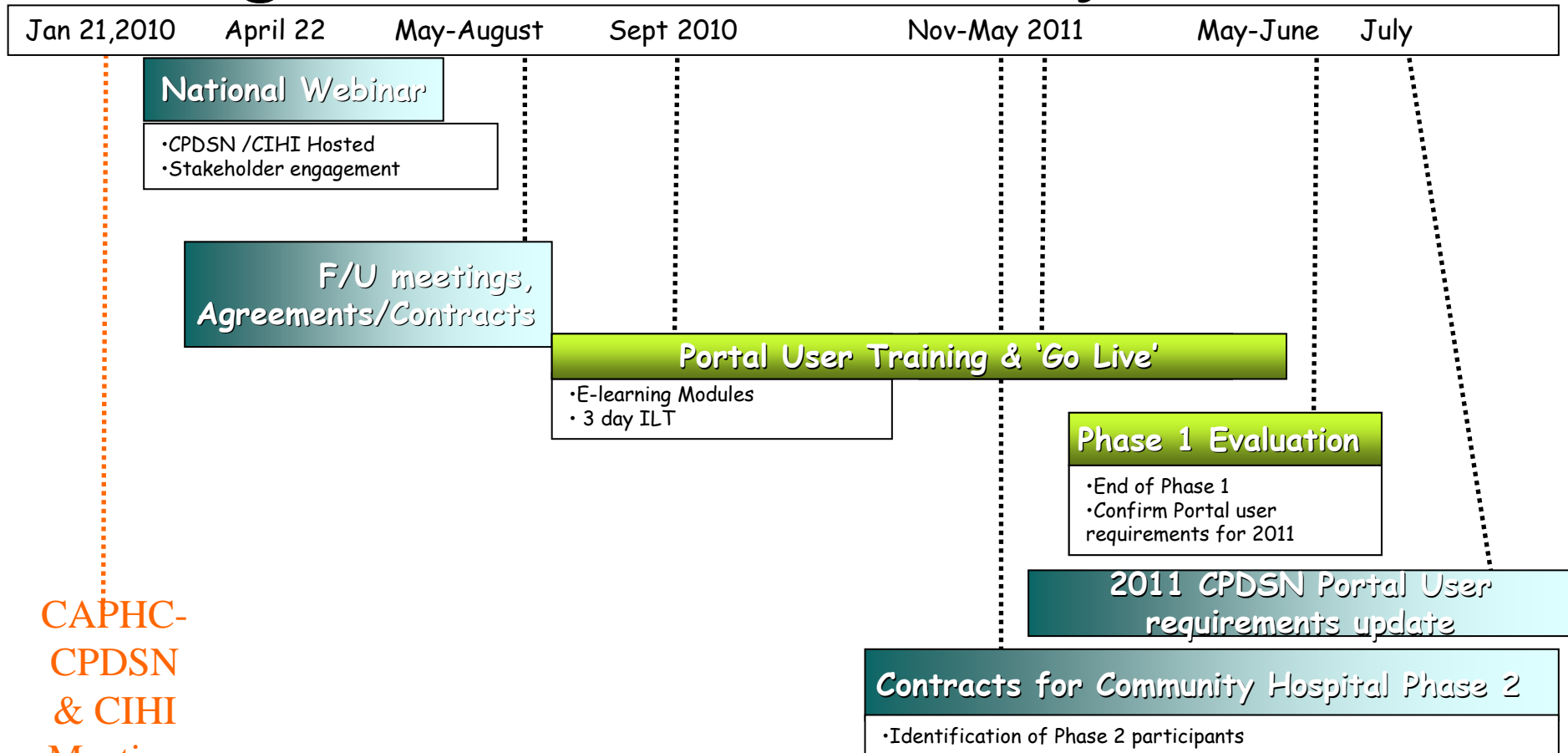
**Sept 1, 2011-Phase 2**

- Roll out to remaining members 6-9 sites

**Sept 1, 2012-Phase 3 (Optional)**



# High Level Preliminary Plan





**CAPHC** Canadian Association of Paediatric Health Centres  
**CPDSN** Canadian Paediatric Decision Support Network

# Questions & thoughts:





**CAPHC** Canadian Association of Paediatric Health Centres  
**CPDSN** Canadian Paediatric Decision Support Network

# Wrap Up

CAPHC [www.caphc.org](http://www.caphc.org)

CAPHC-CPDSN [http://caphc.org/programs\\_benchmarking.html](http://caphc.org/programs_benchmarking.html)

Elaine Orrbine, President & CEO CAPHC at [eorrbine@caphc.org](mailto:eorrbine@caphc.org)

Leah Boon, National Coordinator CAPHC-CPDSN [lboon@caphc.org](mailto:lboon@caphc.org)

Sharon Tracy, Manager Portal Services, CIHI [stracy@cihi.ca](mailto:stracy@cihi.ca)

Linda Elias, Project Lead, CIHI Portal [lelias@cihi.ca](mailto:lelias@cihi.ca)