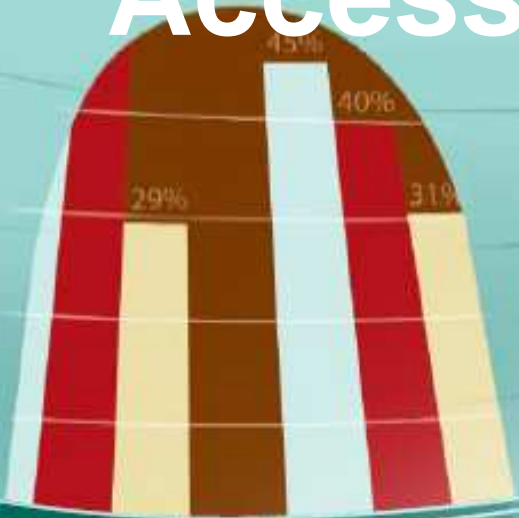


Access

Report

Collaborate



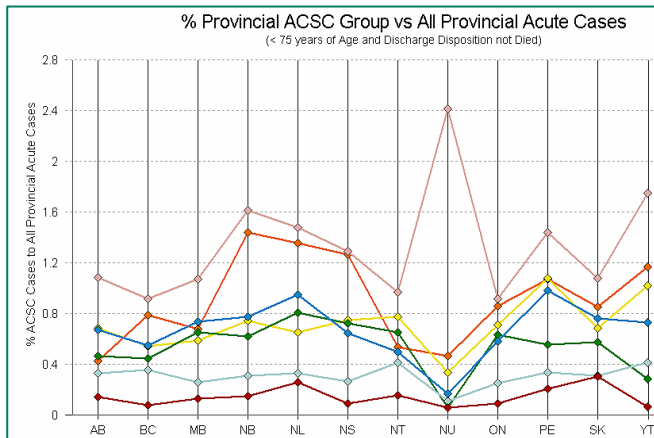
# CIHI Portal and CAPHC: Past, Present and Future

Janine Kaye, Program Lead, Technical Development

14 October 07, Montreal, PQ



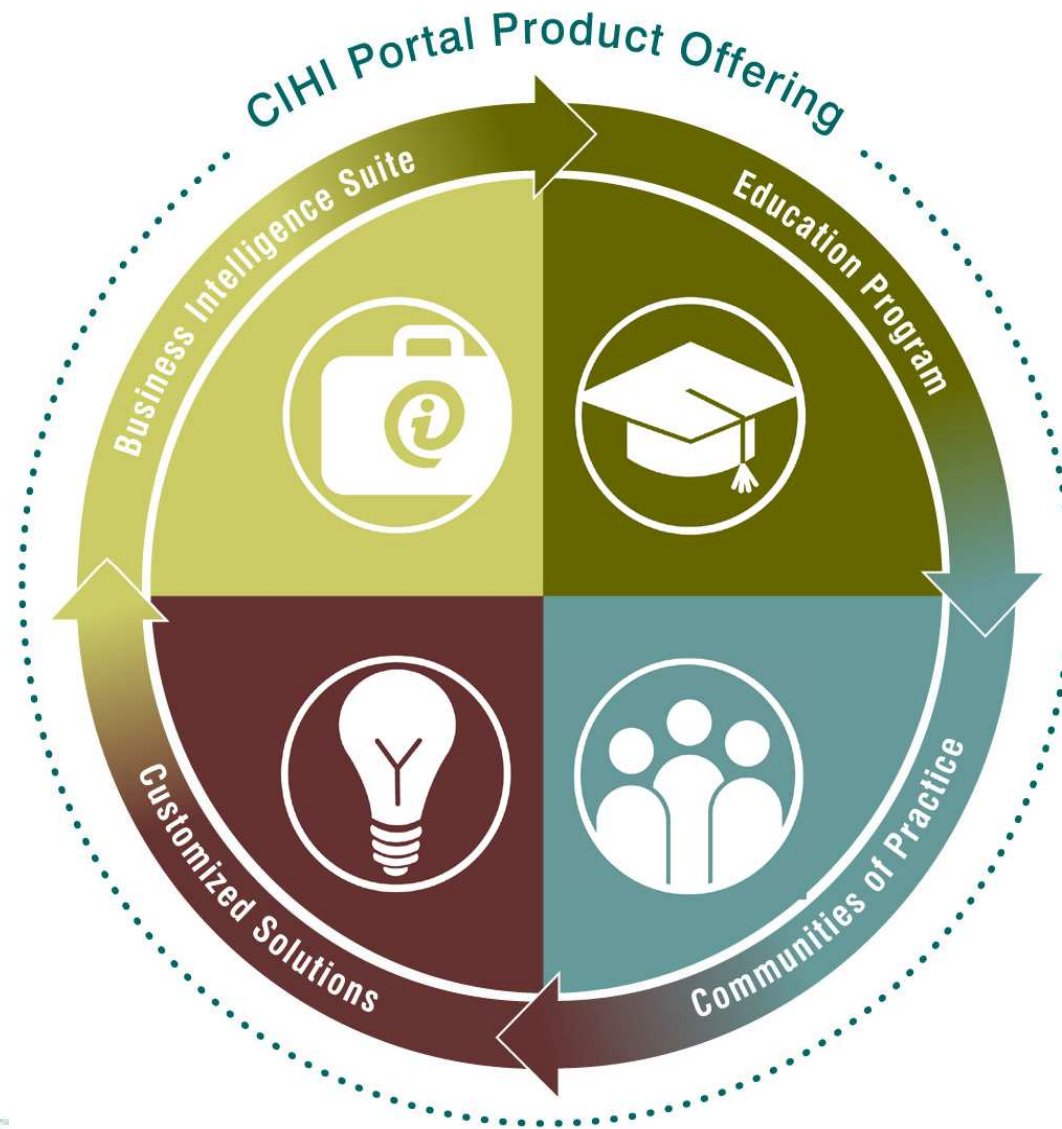
# The Basics...



- Integrates four distinct services within a single, comprehensive health information offering
- Developed for Canadian health care services organizations that submit data to CIHI
- Designed for three different kinds of users, who work together within the offering



# Four Services in One



# The Benefits to You

- Planning and monitoring performance
- Supporting special projects and initiatives
- Building business cases for funding and resourcing
- Demonstrating accountability
- Leveraging best practices
- Engaging in cross-country data user networks



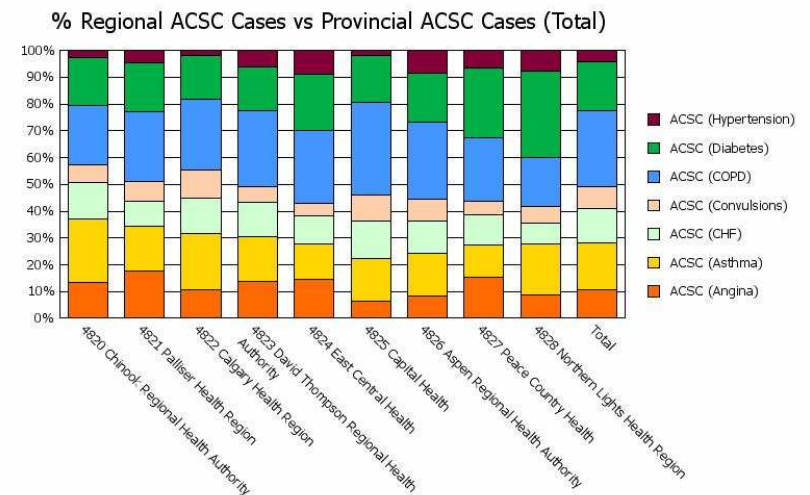
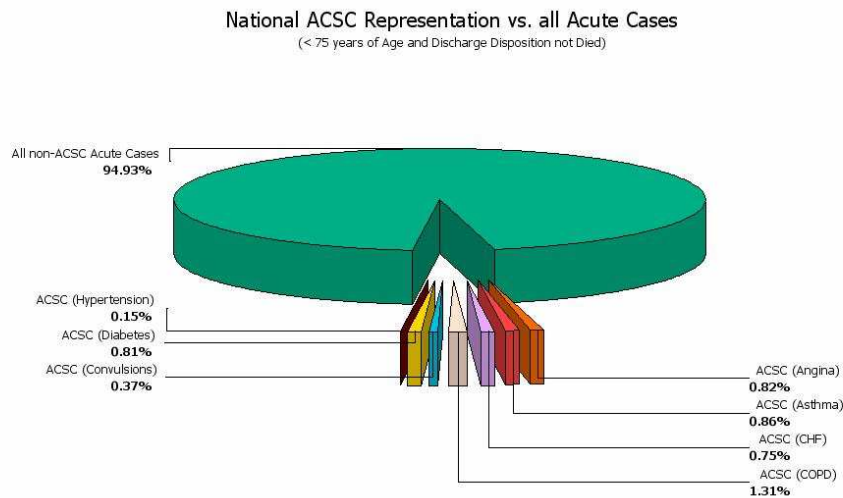
# The Past

- **Release 1.2** – Addition of all SCU and Service Transfer data + support objects for multi-fact analysis
- **Release 1.3** – Addition of 2005/06 closed year data, new regional population data file, updated geography dimension from PCCF
- **Open Quarter Data Pilot** – Data from the first three quarters of 2006/07 added over the course of the year



# The Past

- **Release 1.4** – Three new data elements added (Wait time in ER, Proc CMG CCI and CCP)
- **Release 2.0** – Updates to existing data element definitions and new Information Consumer focused Baseline Reports



# The Present

- **Release 2.1** – Remaining DAD data elements, facility specific data, updated geographic analysis, prompted metrics, standardized rates
- **Release 2.2** – “Look and Feel” release: education materials, enhanced Information Consumer experience, new graphics
- **Release 2.3** – CMG+, multi-fact analysis, most responsible provider service update, updated meta data/knowledge base



# The Present

- 25 sites
- ~125 users



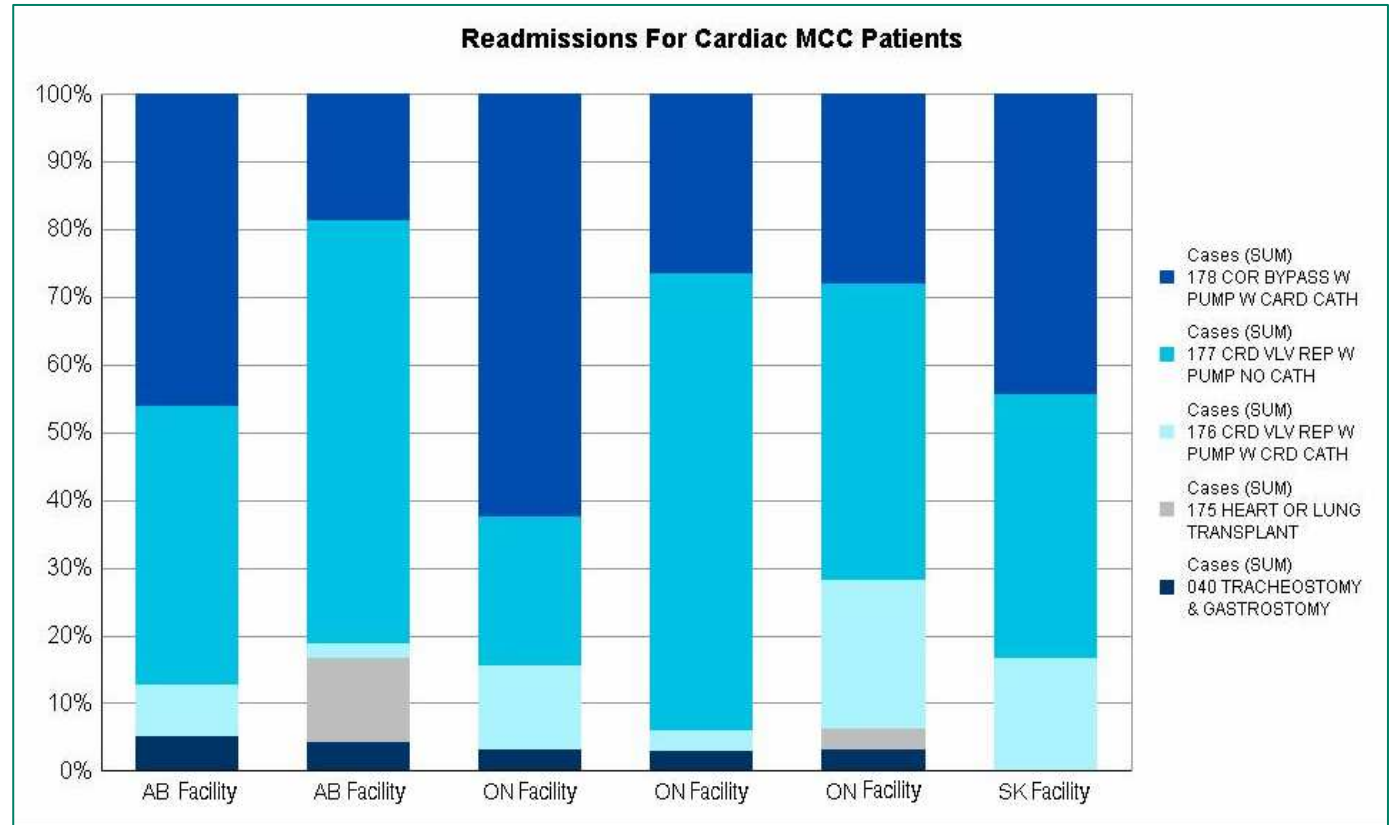
# The Future

- Three pilots scheduled for the remainder of the fiscal year:
  - Re-hospitalization analysis / patient dimension
  - GIS mapping capability
  - MIS data load
- Project initiation for future pilots
  - NACRS data load



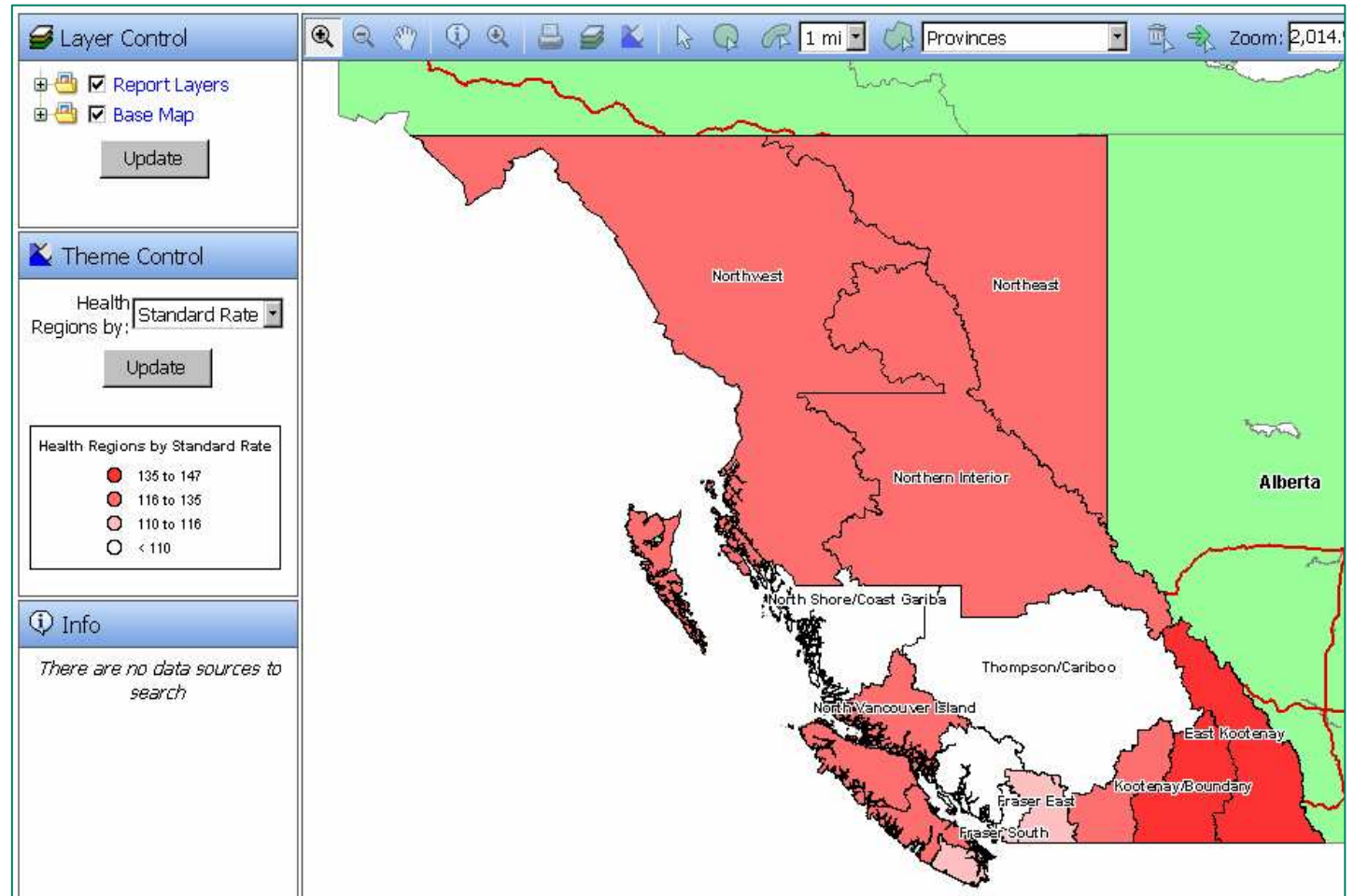
# The Future

## Analysis of episodes of care



# The Future

## Reporting with GIS mapping



# Thank You!

The CIHI Portal Services team would like to thank CAPHC for their participation and ongoing support in this exciting initiative.



# Access

# Report

# Collaborate

## Questions?

# CIHI Portal

